

JOH910 JOHN DEERE LIGHT-WEIGHT QUARTER ZIP BY ADIDAS

A versatile layering piece designed for movement, comfort, and a clean, professional look. This Adidas half-zip delivers lightweight performance with a polished finish, making it ideal for dealership teams, events, and changing conditions throughout the day.

Engineered with soft, double-knit fabric, it provides warmth without bulk while allowing full mobility—perfect for transitioning between indoor and outdoor environments. The half-zip design offers easy temperature control, ensuring all-day comfort whether you're on the floor, in the field, or on the move.

This is a smart, adaptable layer that works across seasons and settings.

Features:

- John Deere logo embroidery on front
- Official certificate of authenticity hang tag
- Regular fit for a clean, easy-to-layer silhouette
- Half-zip design with stand-up collar for adjustable coverage
- 100% recycled polyester – lightweight, durable, and eco-conscious
- Soft double-knit fabric for comfort and mobility
- Breathable construction for all-day wear
- Contrast inner collar for a subtle premium detail
- Self-fabric cuffs and hem for a clean finish
- Adidas logo embroidered in white
- Signature Adidas branding label

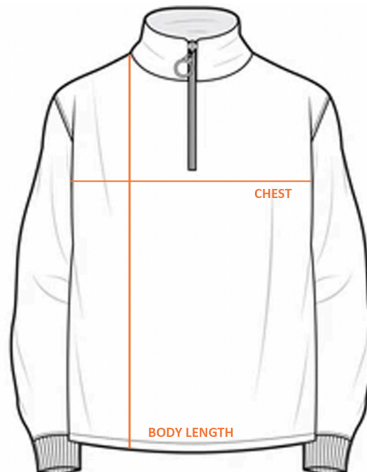
Decoration:

John Deere Contemporary logo embroidered.

**All variations of the John Deere Trademark: including Agriculture & Turf, Construction & Forestry, and Neutral may also be available. Ask us for details!*

Sizing:

SIZE	S	M	L	XL	2XL	3XL
CHEST (cm)	43.5-46	46.5-50	50.5-54	54.5-59	59.5-65	65.5-71
BODY LENGTH (cm)	63	65	69	73	74	75



Note: DKM Blue reserves the right to change colours, technical details or designs.